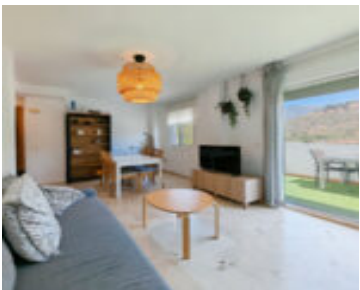
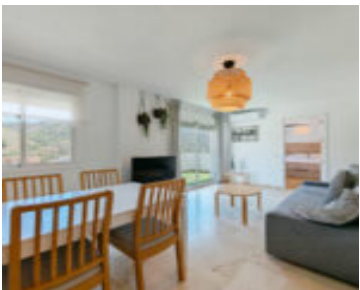
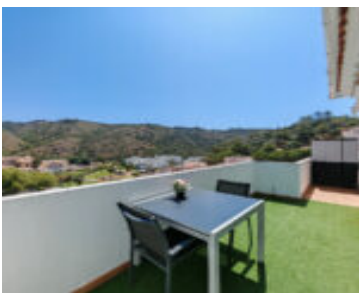


BENAHAVÍS VILLAGE

<https://benahaviscollection.com>



Penthouse for sale in Benahavis Village with 2 bedrooms, 2 bathrooms and with orientation east. In the centre of the village just a view steps from Daidin school, the villages sports facilities and all the shops, restaurants and bars. It is rare for a community so central to have a communal swimming pool, private garage [...]

- 2 beds
- 2 baths
- Apartment, Penthouse
- For Sale
- 56 m²

Basics

Date added: Added 2 weeks ago

Price: €269,000

Bathrooms: 2 baths

Terrace, m2: 14

Type: Apartment, Penthouse

Bedrooms: 2 beds

Area, m²: 56 m²



Call us now

Phone: +34 722 433 294

Email: info@benahaviscollection.com



Amenities & Features

Amenities: Communal Pool **Features:** Close To Schools, Close To Shops, Close To Town, Private Terrace

Taxes & Fees (€)

IBI Fees (Annually): €121

Basura (Annually): €19

Community Fees (Annually): €708

Nearby Schools

State Schools:
CEIP Daidin

International Schools: Atalaya International School, Aloha College, Calpe School, English International College, Swans International School, St Georges School



Call us now

Phone: +34 722 433 294

Email: info@benahaviscollection.com

